



# REFURBISHMENT



REPAIR | REMOUNT | REFURB



# TRANSFORM YOUR TRUCK

You wouldn't throw away a million dollars,  
so why would you scrap your old apparatus?

Countless departments across the country have trusted SVI Refurb with their emergency vehicle and fire apparatus refurbishment needs, adding 10 to 15 years of life to most any vehicle. The result? A like-new apparatus at a fraction of the cost. Add vehicle remounts, truck repairs and apparatus inspections, plus 50 years in custom apparatus manufacturing, and SVI Refurb is the industry's trusted partner in vehicle maintenance and fleet replacement.

**INDEX** REFURB Page 4 | REMOUNT Page 5 | REPAIR Page 6 | INSPECT Page 7



After (SVI Refurb)



**WE REFURB  
ANY BRAND**





Before

After

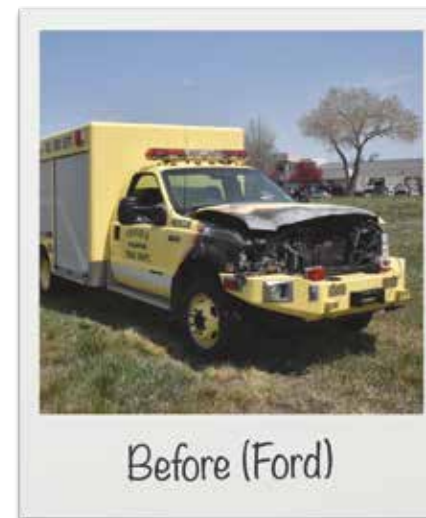
# REFURB

Fire departments turn to SVI Refurb to keep their fleets running like new. Rather than scrapping a tired apparatus, SVI has helped countless departments (as far away as Maryland) extend the life of their most valuable trucks, for a third of the cost it takes to buy new, and all thanks to our long list of fire apparatus refurb services and manufacturing capabilities (laser cutting, CNC machining, powder coating and in-house painting). Whether your department is operating on a limited budget or truck refurbishing is part of your fleet replacement strategy, SVI Refurb can help tackle your refurb while navigating NFPA 1912 standards.

SCAN TO VIEW OUR REFURB GALLERY >



After (Dodge Remount)



Before (Ford)

# REMOUNT

When your fire truck seems to have run its last mile, look to SVI Refurb to remount your apparatus. Whether you're looking to rechassis an old chassis with a new body or remount a new chassis with an old body, SVI Refurb can help you extend the life of your vehicle. Unlike small, third-party shops, our factory direct knowledge and state-of-the-art facility is equipped to handle any chassis remount.

SCAN TO VIEW OUR REFURB GALLERY >



## Rechassis Process



### CHASSIS REFURB

**CORROSION REMOVAL SERVICES:** Chassis sandblasting and two-part epoxy coating

**SUSPENSION COMPONENT REPLACEMENT:** Airbags, brakes, drivetrains, springs and more

**CHASSIS UPGRADES:** Front bumper extension, PTO or generator integration and addition of reels, hitches, receivers and InstaChains

### BODY REFURBISHMENT

**BODY REFURB:** Door repair, panel replacement body fabrication and treadplate polishing

**TRUCK REBRANDING:** Refresh or rebrand your fleet with new paint and graphics

**BODY UPGRADES:** Compressors, Cascade fill stations, piston-assisted hosebed covers and custom tool mounting configurations

### UPDATES AND UPGRADES

**CAB UPGRADES:** Seat re-upholstery, NFPA 14.3.13 seatbelt replacement, NFPA-approved treadplate flooring, intercom systems, new door hardware and custom consoles, cabinetry, lock boxes and refrigerators

**LIGHTING UPGRADES:** Cab, warning and scene lighting upgrades, along with light tower refurb and quartz halogen to LED retrofits

### BODY DISMOUNTING

Our specialized team dismantles the body from the chassis, carefully disconnecting wires and removing obsolete hardware. No remount is too large. Above, a hazmat is being dismantled in preparation for a new body.

### BODY OR CHASSIS REFURB

Eventually, the body (or chassis) is carted away for refurb. In the above instance, the Annapolis (MD) Fire Department chose to mount a new body to its existing chassis. The chassis was overhauled and repainted from yellow to red.

### FROM OLD TO BRAND NEW

With 50 years in custom apparatus manufacturing, SVI Refurb can manufacture an entirely new body for your project, or we can refurb the existing module and remount it to a new chassis. We work with a long list of chassis manufacturers.

OUR CHASSIS PARTNERS:





After

# REPAIR

At SVI Refurb, we understand how vital your apparatus is to your day-to-day operations, so when fire truck accidents happen, we're here to help you quickly get your rig back on the road and into service. From small accidents to major collisions, we can tackle any body repair, including door repairs, panel replacement and body fabrication. With laser cutting, CNC machining, powder coating and in-house painting all under one roof, we're your one-stop fire truck repair center. SVI Refurb follows NFPA 1911: Standard for the Inspection, Maintenance, Testing and Retirement of In-Service Automotive Apparatus.



Before

SCAN TO VIEW MORE COLLISION REPAIRS >



# INSPECT

NFPA recommends departments inspect their trucks on a daily, weekly, quarterly and annual basis, and while all of these inspections may seem taxing on a department, these inspections are important to keeping your crews safe and your trucks in working order. SVI Refurb offers inspection services to help departments tackle the extensive quarterly and annual checklists in NFPA 1911 4.5.5.

## LADDER INSPECTIONS

SVI Refurb offers NFPA aerial ladder testing services, including sag, drift and extension ladder testing on aerial platforms, elevating platforms and water towers. As part of our testing services, we conduct: a visual inspection, operational inspection, a load test inspection and a water system inspection.

## PUMP TESTING

SVI Refurb performs NFPA 25 fire pump testing services and UL certification at a state-of-the-art testing facility in Loveland, Colo. SVI Refurb can test the volume, pressure and vacuum of your pump. The testing features two tanks and a test pit with 20,000 gallons of water. Pressure gauges and water volume pitots are calibrated every six months to ensure accurate test results.



## COLLISION REPAIR

**DOOR REPAIRS/REPLACEMENT:** Cab, roll-up or body swing-style door repair or replacement, along with upgrades to trim, latches, hinges and graphics

**ACCIDENT REPAIRS:** Panel replacement and body fabrication, along with in-house paint and finishing services



## PUMP REPAIR

**PUMP REPAIR:** Pump seals, pump gauges (frozen gauges or complete replacement) and transfer, relief, pump and drain valve repairs

**RELATED CAPABILITIES:** Leaky plumbing, cracked tank replacement and pump inspections

**PUMP UPGRADES:** Valves, hoses, panel lights and LDH manifolds



## AERIAL REPAIRS

**AERIAL TROUBLESHOOTING AND REPAIRS:** Aerial services at our 160,000-square-foot facility, including preventive maintenance

**REPAIR SPECIALTIES:** Wear pad adjustments, hydraulic cylinder rebuilds and aerial parts replacement (sheave wheels, hydro-motion swivels and extension/retraction cables)



# COST ANALYSIS

Whether you're assessing the feasibility of a refurbishment or trying to justify the cost of a new fire truck, we've assembled this online Cost Analysis page to aid in your decision making.



< SCAN THIS TO VIEW THIS >





SVIREFURB.COM



svirefurb.com

3842 Redman Dr., Ft Collins, CO 80524

970.290.1813

All information in this brochure is the latest available at the time of publication. Additionally, all photos in this brochure depict trucks that were spec'ed with custom options. See a SVI Trucks representative or authorized dealer for details. Printed in the USA. 500 0720 ©2020 SVI Refurb